

VELA EVO

surface / ceiling

xal.com/vela-evo



Quickinfo

GENERAL

surface / ceiling mounted
IP 40

LED

Mid-power LED
up to 143lm/W
3000 K, 4000 K
CRI ≥ 80
Binning initial ≤ 3 MacAdam

ESTIMATED LED LIFETIME

L80/50 000 h

OPTICAL

direct, direct/indirect illumination
PMMA cover opal
microprismatic (UGR < 19)

ELECTRICAL

non DIM, DIM DALI
DALI: CLO

PHYSICAL

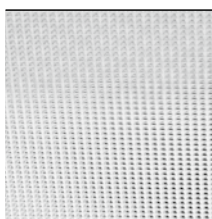
aluminium
powder-coated
halogen-free cable

Description

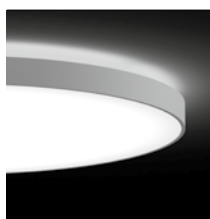
DE Runder Leuchtenkörper aus Aluminium, gerolltes Profil, nahtlos verschweißt; Oberfläche weiß, grau, dunkelgrau, schwarz, beige oder dunkelbraun pulverbeschichtet; hochreflektierende Beschichtung für verbesserten Wirkungsgrad; komfortables, werkzeugloses Schnellmontagesystem; absolut homogen ausgeleuchtete, satinierte PMMA-Abdeckung; bis ø600 mm: mikroprismatische PMMA-Abdeckung; bildschirmtaugliche Arbeitsplatzleuchte nach DIN EN 12464-1 (UGR < 19); direkt/indirekte Abstrahlcharakteristik für zusätzliche Akzentuierung der Decke und mehr Sehkomfort; gleiche Leuchtdichte bei allen Flächenleuchten mit selber Bestückung (e LED, e² LED oder e²⁺ LED); energieeffiziente LEDs mit sehr guter Farbwiedergabe; Binning initial ≤ 3 MacAdam; lieferbar in den Lichtfarben 3000K und 4000K; CRI ≥ 80; min. 80% des Lichtstromes nach 50 000 h Lebensdauer; Leuchte mit 2 Kabelöffnungen und Steckklemme für Durchgangsverdrahtung; Schutzart IP 40; SK I; DALI-dimmbar mit CLO-Funktion; optional nicht dimmbar

EN Round luminaire housing in aluminium, rolled profile, seamlessly welded; surface powder coated in white, grey, dark grey, black, beige or dark brown; highly reflective coating for improved efficiency; convenient quick mounting system without tools; completely homogeneously illuminated, satinised PMMA cover; up to ø600 mm: microprismatic PMMA cover; workplace light suitable for VDUs according to DIN EN 12464-1 (UGR < 19); direct/indirect illumination characteristic for additional emphasis of the ceiling and more visual comfort; same light density for all surface lights with the same components (e LED, e² LED or e²⁺ LED); energy-efficient LEDs with very good colour rendering; binning initial ≤ 3 MacAdam; available in the light colours 3000K and 4000K; CRI ≥ 80; min. 80% of the luminous flux after 50 000 hours; luminaire with 2 cable openings and plug-in terminals for through wiring; protection class IP 40; PC I; DALI dimmable with CLO function; optional non-dimmable

Features



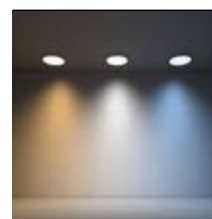
microprismatic
(UGR < 19)



direct/indirect light
distribution



easy mounting by
click-mechanism



tunable white 3000–
6000 K on request

Standard configuration

COLOUR TEMPERATURE
3000K 5

CONTROL
DIM DALI / CLO 3

MATERIAL COLOUR
white 7



LIGHT OPTIC COVER
opal 0

Extended configuration

COLOUR TEMPERATURE
4000K 6

CONTROL
non DIM 1

MATERIAL COLOUR
beige K
grey G
dark grey D
dark brown N
black 8



+5% surcharges

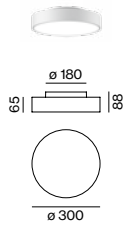
LIGHT OPTIC COVER
microprismatic (UGR < 19) P

Options on request

COLOUR RENDERING INDEX
CRI ≥ 90

COLOUR TEMPERATURE
tunable white 3000–6000K (2 DALI)

EMERGENCY LIGHT
1h accupack
3h accupack
not available for VELA EVO 300



VELA EVO 300 surface

DIRECT



SYSTEM POWER	COLOUR TEMP.	LUMINOUS FLUX	ORDER CODE
12W e ²	3000K	1300lm	0 7 3 - 1 1 3 1 <input type="checkbox"/> <input checked="" type="checkbox"/> <input type="checkbox"/> <input type="checkbox"/>
	4000K	1380lm	
17W e ²⁺	3000K	1910lm	0 7 3 - 1 1 3 2 <input type="checkbox"/> <input checked="" type="checkbox"/> <input type="checkbox"/> <input type="checkbox"/> <input type="checkbox"/> <input type="checkbox"/>
	4000K	2030lm	

DIRECT / INDIRECT



SYSTEM POWER	COLOUR TEMP.	LUMINOUS FLUX	ORDER CODE
13W e ²	3000K	↓ 1300/↑ 390lm	0 7 3 - 1 1 3 4 <input type="checkbox"/> <input checked="" type="checkbox"/> <input type="checkbox"/> <input type="checkbox"/> <input type="checkbox"/> <input type="checkbox"/>
	4000K	↓ 1380/↑ 410lm	
21W e ²⁺	3000K	↓ 1910/↑ 590lm	0 7 3 - 1 1 3 5 <input type="checkbox"/> <input checked="" type="checkbox"/> <input type="checkbox"/> <input type="checkbox"/> <input type="checkbox"/> <input type="checkbox"/>
	4000K	↓ 2030/↑ 620lm	

VELA EVO 450 surface

DIRECT



SYSTEM POWER	COLOUR TEMP.	LUMINOUS FLUX	ORDER CODE
16W e ²	3000K	2070lm	0 7 3 - 1 1 4 1 <input type="checkbox"/> <input checked="" type="checkbox"/> <input type="checkbox"/> <input type="checkbox"/> <input type="checkbox"/> <input type="checkbox"/>
	4000K	2200lm	
27W e ²⁺	3000K	3290lm	0 7 3 - 1 1 4 2 <input type="checkbox"/> <input checked="" type="checkbox"/> <input type="checkbox"/> <input type="checkbox"/> <input type="checkbox"/> <input type="checkbox"/>
	4000K	3490lm	

DIRECT / INDIRECT



SYSTEM POWER	COLOUR TEMP.	LUMINOUS FLUX	ORDER CODE
23W e ²	3000K	↓ 2070/↑ 860lm	0 7 3 - 1 1 4 4 <input type="checkbox"/> <input checked="" type="checkbox"/> <input type="checkbox"/> <input type="checkbox"/> <input type="checkbox"/> <input type="checkbox"/>
	4000K	↓ 2200/↑ 910lm	
37W e ²⁺	3000K	↓ 3290/↑ 1220lm	0 7 3 - 1 1 4 5 <input type="checkbox"/> <input checked="" type="checkbox"/> <input type="checkbox"/> <input type="checkbox"/> <input type="checkbox"/> <input type="checkbox"/>
	4000K	↓ 3490/↑ 1300lm	

VELA EVO 600 surface

DIRECT

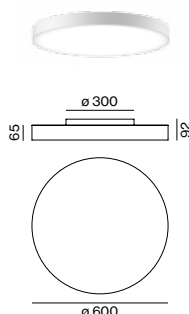


SYSTEM POWER	COLOUR TEMP.	LUMINOUS FLUX	ORDER CODE
31W e ²	3000K	3970lm	0 7 3 - 1 1 5 1 <input type="checkbox"/> <input checked="" type="checkbox"/> <input type="checkbox"/> <input type="checkbox"/> <input type="checkbox"/> <input type="checkbox"/>
	4000K	4220lm	
46W e ²⁺	3000K	5640lm	0 7 3 - 1 1 5 2 <input type="checkbox"/> <input checked="" type="checkbox"/> <input type="checkbox"/> <input type="checkbox"/> <input type="checkbox"/> <input type="checkbox"/>
	4000K	5990lm	

DIRECT / INDIRECT



SYSTEM POWER	COLOUR TEMP.	LUMINOUS FLUX	ORDER CODE
44W e ²	3000K	↓ 3970/↑ 1810lm	0 7 3 - 1 1 5 4 <input type="checkbox"/> <input checked="" type="checkbox"/> <input type="checkbox"/> <input type="checkbox"/> <input type="checkbox"/> <input type="checkbox"/>
	4000K	↓ 4220/↑ 1920lm	
59W e ²⁺	3000K	↓ 5640/↑ 1760lm	0 7 3 - 1 1 5 5 <input type="checkbox"/> <input checked="" type="checkbox"/> <input type="checkbox"/> <input type="checkbox"/> <input type="checkbox"/> <input type="checkbox"/>
	4000K	↓ 5990/↑ 1870lm	



Standard configuration

COLOUR TEMPERATURE **⚡**
3000 K 5

CONTROL **⬆**
DIM DALI / CLO 3

MATERIAL COLOUR **👍**
white 7

7

LIGHT OPTIC COVER
opal

Extended configuration

COLOUR TEMPERATURE **⚡**
4000 K 6

CONTROL **⬆**
non DIM 1

MATERIAL COLOUR **👍**
beige K
grey G
dark grey D
dark brown N
black 8



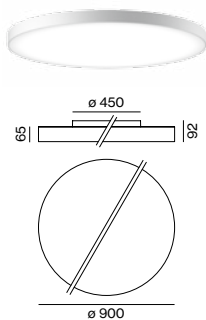
+5% surcharges

Options on request

COLOUR RENDERING INDEX
CRI ≥ 90

COLOUR TEMPERATURE
tunable white 3000–6000 K (2 DALI)

LIGHT OPTIC COVER
microprismatic



VELA EVO 900 ceiling

DIRECT

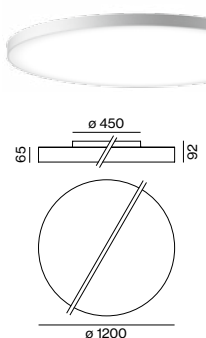


SYSTEM POWER	COLOUR TEMP.	LUMINOUS FLUX	ORDER CODE
46 W e	3000 K	6130 lm	0 7 3 - 1 1 7 0 ⚡ 1 👍 O
73 W e ²	4000 K	6520 lm	
	3000 K	9360 lm	0 7 3 - 1 1 7 1 ⚡ 👍 O
	4000 K	9950 lm	

DIRECT / INDIRECT



SYSTEM POWER	COLOUR TEMP.	LUMINOUS FLUX	ORDER CODE
61 W e	3000 K	↓ 6130 / ↑ 2090 lm	0 7 3 - 1 1 7 3 ⚡ 1 👍 O
	4000 K	↓ 6520 / ↑ 2220 lm	
104 W e ²	3000 K	↓ 9360 / ↑ 4140 lm	0 7 3 - 1 1 7 4 ⚡ 👍 O
	4000 K	↓ 9950 / ↑ 4400 lm	



VELA EVO 1200 ceiling

DIRECT



SYSTEM POWER	COLOUR TEMP.	LUMINOUS FLUX	ORDER CODE
81 W e	3000 K	10760 lm	0 7 3 - 1 1 8 0 ⚡ 1 👍 O
	4000 K	11430 lm	
158 W e ²	3000 K	20360 lm	0 7 3 - 1 1 8 1 ⚡ 👍 O
	4000 K	21630 lm	

DIRECT / INDIRECT

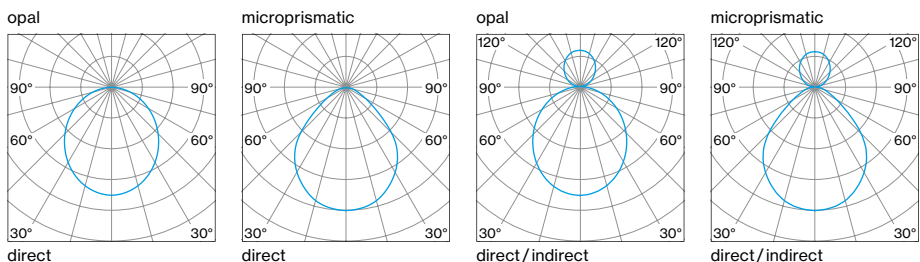


SYSTEM POWER	COLOUR TEMP.	LUMINOUS FLUX	ORDER CODE
110 W e	3000 K	↓ 10760 / ↑ 3950 lm	0 7 3 - 1 1 8 3 ⚡ 1 👍 O
	4000 K	↓ 11430 / ↑ 4200 lm	
199 W e ²	3000 K	↓ 20360 / ↑ 5400 lm	0 7 3 - 1 1 8 4 ⚡ 👍 O
	4000 K	↓ 21630 / ↑ 5740 lm	

Accessories

TYPE	ORDER CODE
dismounting tool (for ø 600 / 900 / 1200)	0 7 3 - 1 1 0 0 0 0

LIGHT DISTRIBUTION



Inspiration

ÖBB Headquarters
Vienna, Austria

PRODUCT
VELA EVO surface

ARCHITECT
Zechner & Zechner ZT GmbH
Vienna, Austria



Inspiration

Optician and Eyewear Külling
St. Gallen, Switzerland

CONCEPT/DESIGN
HEIKAUS Concept GmbH

PRODUCT
VELA EVO surface





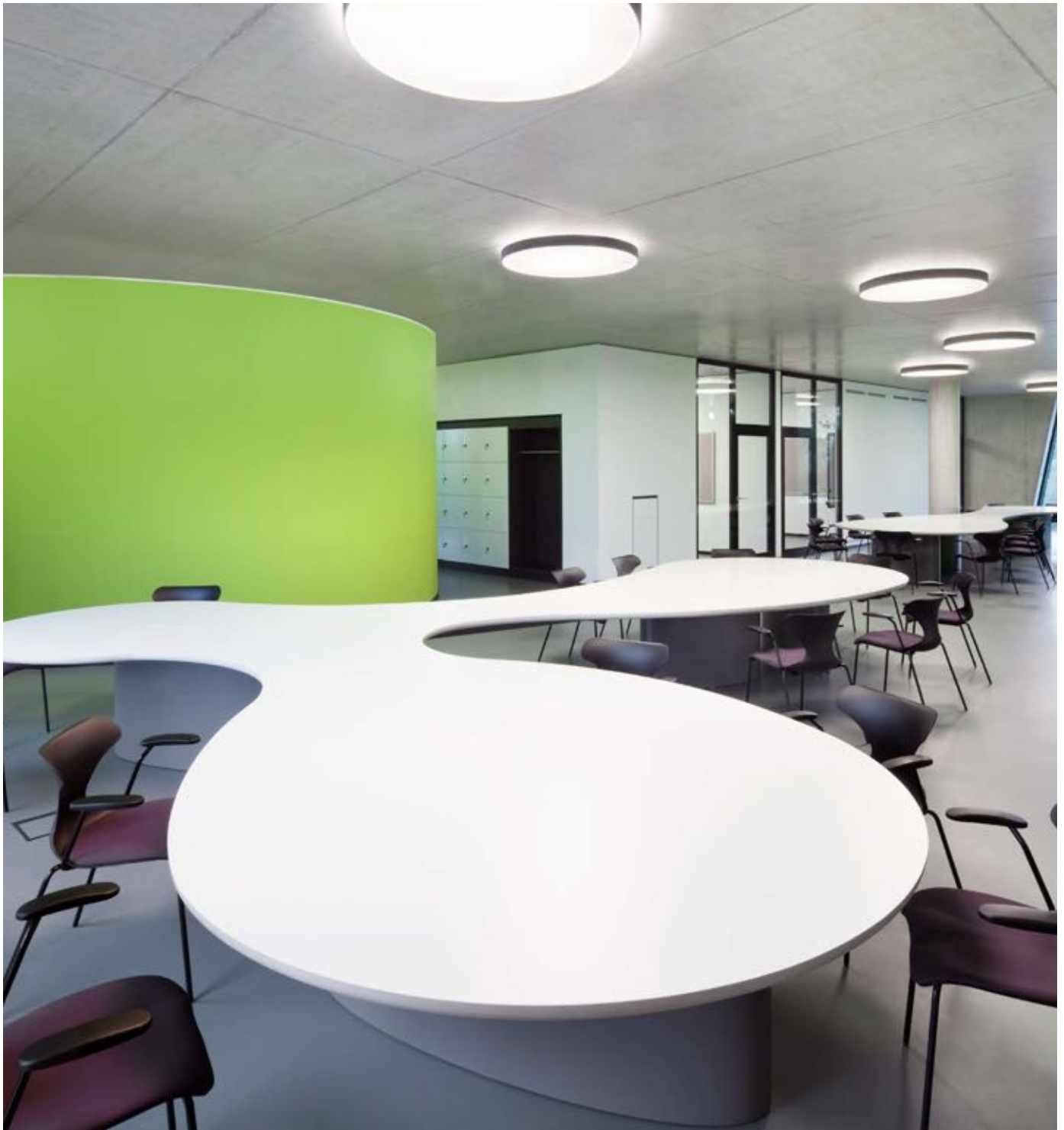
Inspiration

O.A.S.E Medical Library
Dusseldorf, Germany

PRODUCT
VELA EVO ceiling

ARCHITECT
HPP Architects
Dusseldorf, Germany

LIGHTING DESIGN
a · g Licht Gbr
Bonn, Germany





Inspiration

Betonring
St. Veit, Austria

ARCHITECT
spado architects
Klagenfurt, Austria

LIGHTING DESIGN
Hans Vieth Lebens-Art Einrichtungsdesign
Cologne, Germany

PRODUCT
VELA EVO surface



