



GABRIEL SCOTT  
EST 2012



372 Broome Street, New York, NY 10013  
(212) 837-2923 • [info@gabrielscott.com](mailto:info@gabrielscott.com)



## The **MYRIAD** Series

The Myriad series is the newest addition to the GABRIEL SCOTT lighting family. Inspired by nature's bioluminescent organisms, this modular series is made up of the brand's signature double-blown glass and satin metallic hardware. Its articulated stems carry the soft-lit pivoting heads to create a delicate, asymmetric and ever-changing silhouette.

These fine, jewel-like fixtures are offered in assorted arrangements and available in various metal and glass finishes.

All Gabriel Scott pieces are handmade in Canada.

GABRIEL SCOTT  
EST. 2012





**MYRIAD X-Long 13 Chandelier**

Satin Brass Frame  
Alabaster-White Double-Blown Glass  
80" x 20" x 29" H +stem







GABRIEL SCO

1951 2012



MYRIAD Short 7 Chandelier

Satin Brass Frame

Alabaster-White Double-Blown Glass

30" x 18" x 24" H + stem





## The WELLES Series

Made up of a sequence of interconnected geometric shapes, the WELLES is a modular and customizable lighting-system that forms sculptural and organic shapes in all its various configurations and silhouettes.

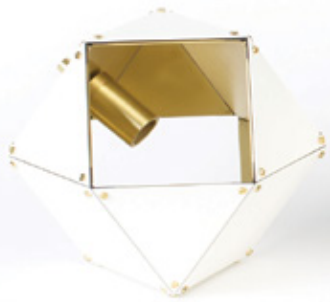
From long branches to large clusters, the nature of this metallic light-fixtue allows for infinite silhouette options.

All Gabriel Scott pieces are handmade in Canada.

### WELLES Long Chandelier

As shown:  
Blackened Steel exterior, Satin Brass interior.  
60" x 18" x 18" H + drop

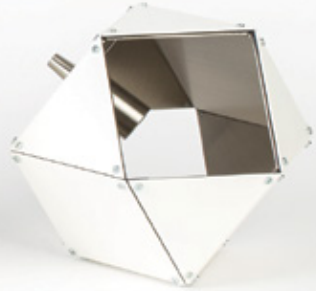




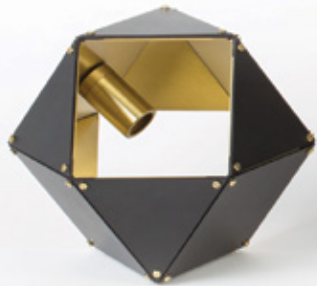
Matte White /  
Satin Brass



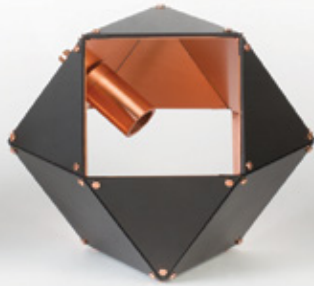
Matte White /  
Satin Copper



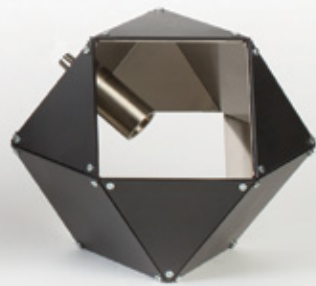
Matte White /  
Satin Nickel



Black Steel /  
Satin Brass



Black Steel /  
Satin Copper



Black Steel /  
Satin Nickel



Satin Brass /  
Satin Brass



Satin Copper /  
Satin Copper



Satin Nickel /  
Satin Nickel



## GO CUSTOM!

Custom Sizes & Configurations Available.

Made up of a series of interconnected geometric shapes, The WELLES is a modular and customizable light-system that form a sculptural and organic shape in all its various configurations and dimensions.

From long branches, to large clusters, to vertical strands - the nature of this metallic light-fixture allows for infinite silhouette options.

The WELLES is UL listed.





**WELLES Central**

As shown:  
Satin Copper exterior & interior  
Satin Brass exterior & interior  
28"D x 16" H + stem

**WELLES Long Chandelier**

As shown:

Matte White exterior, Satin Copper interior  
96" x 18" x 18" H + drop

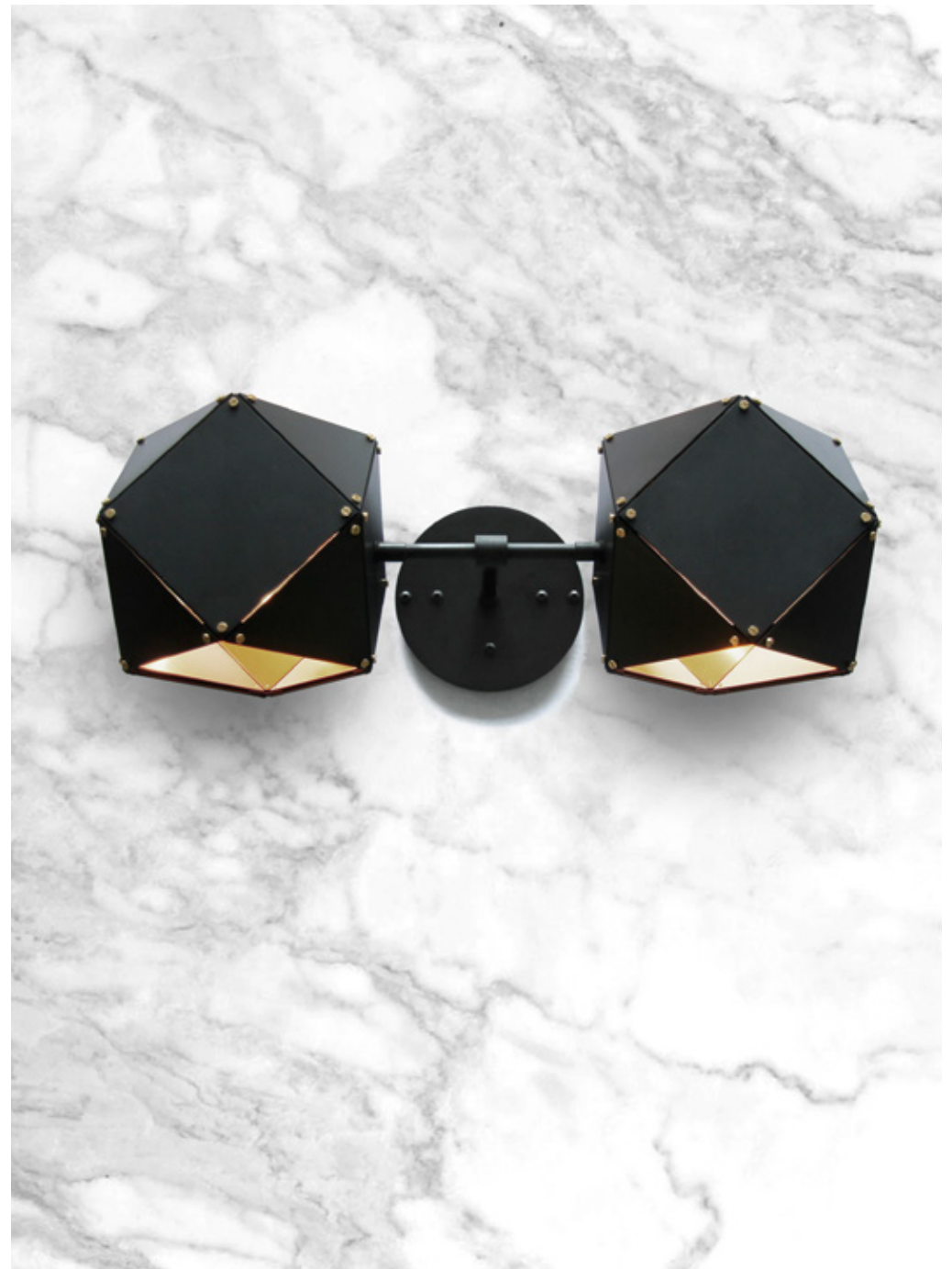




### WELLES Wall Sconce

As shown:  
Blacked Steel exterior, Satin Brass interior

Single Head: 6" x 6" x 9" from wall  
Double Head: 6" x 16" x 9" from wall



# The GLASS-WELLES Series

A new type of modular elegance, the WELLES bridges feminine and masculine sensibilities for a perfect blend of strength and sophistication.

Each one of a kind glass piece is mold-blown to generate a gem like form and create a bright diffused light. Polished prong-like hardware boldly supports each glass volume and holds the body of the overall organic silhouette.

All Gabriel Scott pieces are handmade in Canada.

GABRIEL SCOTT  
EST. 2012



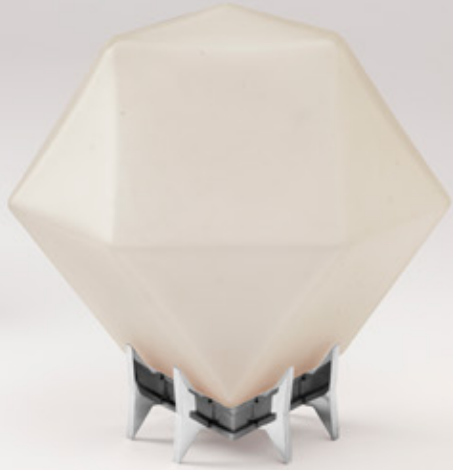


**WELLES-Glass Long Chandelier**

As shown:  
Alabaster Blown-Glass, Satin Brass Hardware  
62" x 23" H x 19" + drop







Alabaster Glass / Polished Nickel



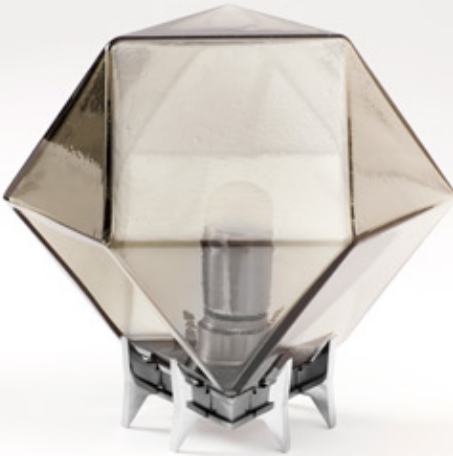
Alabaster Glass / Polished Copper



Alabaster Glass / Polished Brass



Alabaster Glass / Blackened Steel



Smoked Glass / Polished Nickel



Smoked Glass / Polished Copper



Smoked Glass / Polished Brass



Smoked Glass / Blackened Steel



**WELLES-Glass Wall Sconce**

As shown:  
Alabaster Blown Glass, Satin Copper / Black Hardware  
8"W x 13.5" H x 8" from wall



**WELLES Double-Blown  
Glass Pendants**

As shown:  
Alabaster-White, Smoked-Gray, and California-Pink  
Satin Copper and Satin Brass Hardware  
7"Dia x 7.5"H + Drop





**WELLES Double-Blown Glass Pendants,  
Hanging Sconce, and Wall-mount Sconce**

As shown:  
Alabaster-White, Smoked-Gray,  
Satin Copper and Satin Brass Hardware  
7"Diax7.5"H + Drop





# The BRIOLETTE Series

Named for its sharp edges and various facets, the BRIOLETTE Pendant is making its debut to the GABRIEL SCOTT collection.

Available in pendant and flush-mount application, the supporting prongs and signature double-blown glass are available in various tones and finishes.

All Gabriel Scott pieces are handmade in Canada.

GABRIEL SCOTT  
EST. 2012





**BRIOLETTE Small & Large Pendants**

Shown in Alabaster & Smoked Blown-Glass

Satin Brass and Copper hardware

Small: 9" D x 11.5" H + stem

Large: 13" D x 16.5" H + stem





# The HARLOW Series

Elegant sculptural light-fixture inspired by jewelry design featuring a mold-blown glass gem in a chic metallic setting to create an asymmetrical starburst of light.

HARLOW is available in various color ways, and held in a metallic frame referencing a prong setting, the alabaster glass makes for a beautiful diffuser of soft light, while the prong-inspired hardware adds glamour to each fixture.

All Gabriel Scott pieces are handmade in Canada.

GABRIEL SCOTT  
EST. 2012







**Large HARLOW Chandelier**

Satin Brass Frame  
Alabaster-White Blown-Glass  
76" x 34" x 42" H +stem



Also shown:  
PRONG Console  
PRONG Mirror



GABRIEL SCOTT  
EST. 2012





**Large HARLOW Chandelier**

Satin Brass Frame  
Alabaster-White Blown-Glass  
76" x 34" x 42" H +stem



**HARLOW Dried Flowers**

As shown:  
Satin Copper Frame  
Alabaster-White Blown-Glass  
28" D x 62" H + stem

Also Shown:  
**PRONG Dining Table**



**Small HARLOW Chandelier**

As shown:  
Blackened Steel Frame  
Smoked-Gray Blown-Glass  
32" x 32" x 36" H + stem





**Small HARLOW Chandelier**

As shown:  
Satin Brass & Satin Copper Frames  
Alabaster-White Blown-Glass  
32" x 32" x 36" H + stem



## HARLOW Spoke Chandelier

As shown:

Satin Brass Frame, Alabaster White Blown Glass

Blackened Steel Frame, Smoked-Gray Blown Glass

Large Spoke: 64" D x 17.5" H + stem

Small Spoke: 52" D x 17.5" H + stem





### HARLOW Pendants

As shown:  
Satin Brass Frame, Alabaster-White  
Satin Copper Frame, Alabaster-White

Opposite Page:  
Black Steel Frame, Smoked Blown-Glass

Small: 14" D x 12" H +stem  
Large: 20" D x 18" H +stem  
X-Large: 25" D x 23" H +stem



## HARLOW Wall-Sconce

As shown:  
Satin Copper Frame, Alabaster-White  
Satin Brass Frame, Alabaster-White

13" W x 12" H x 6" from wall





## The **KELLY** Chandelier

A bold and elegant sculptural light fixture, the KELLY Chandelier holds over a half-kilometer of reflective chain to generate a staggered and diametrically exquisite geometrical form. Light glimmers throughout the chain for to create a soft glistening cloud effect.

Available in black steel with black and silver chain, or entirely in brass.

All Gabriel Scott pieces are handmade in Canada.

GABRIEL SCOTT  
EST. 2012





## KELLY Chandelier Black

As shown:  
Black Steel Blades, Satin Brass Hardware  
1/2 Kilometer of Black & Silver Chain  
32" x 32" x 40" H + stem





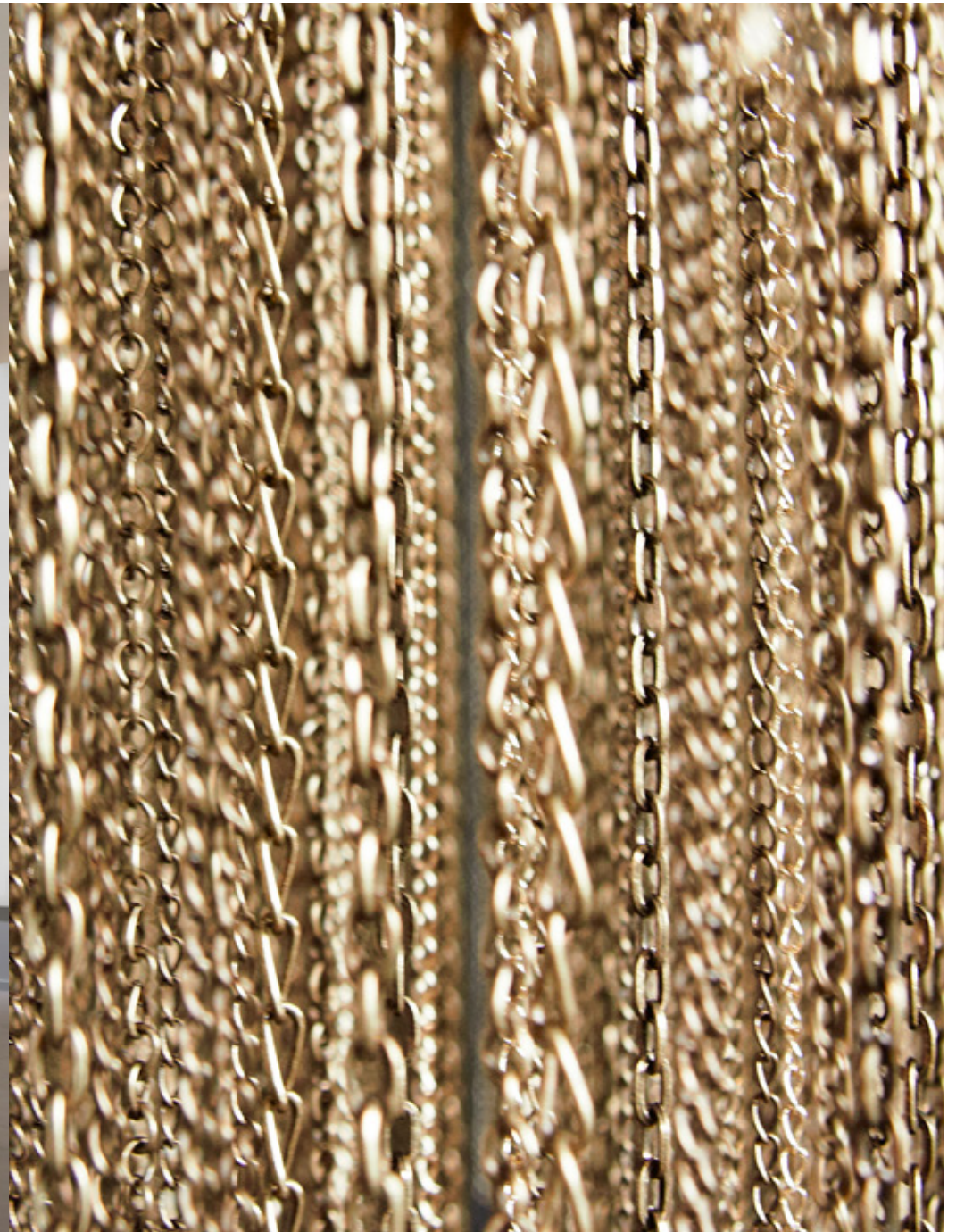
**KELLY Chandelier Brass**

As shown:  
Satin Brass Finish Blades & Hardware  
1/2 Kilometer of Brass Chain  
32" x 32" x 40" H + stem



**KELLY Chandelier X-Long**

As shown:  
Satin Brass Blades, Hardware & Chain  
74"x32"x38"H + stem





GABRIEL SCOTT  
Flagship Showroom, New York City



With backgrounds in architecture, industrial design and jewelry-making, Gabriel Kakon and Scott Richler bring a multidisciplinary set of skill and style to the furniture & lighting world as GABRIEL SCOTT.

Since their first collaboration in early 2004, the Canadian brothers-in law have designed and manufactured exclusive pieces for the trade market throughout North America.

In 2012, they launched GABRIEL SCOTT, a chic and contemporary line of furniture and lighting fixtures. Accessible to the retail and commercial market, the growing line continues to remain true to the designer's unique signature style and quality.

All GABRIEL SCOTT pieces are handmade in their Montreal Studio and are stocked-to-ship from Upstate New York.

Since 2014, the exclusive line has been available to view at their flagship showroom, located in the beautifully restored Brewster Carriage House at the corner of Broome and Mott Streets in downtown Manhattan.



[www.GabrielScott.com](http://www.GabrielScott.com)